



श्री Venkateshwar International School

Sector-18, Dwarka, New Delhi-78

SAT

MAIN (2018-19)

Class VIII

Time Allowed: 1 hr 15mins

Total M.M-60

English _____ **Math** _____ **Science** _____ **Total (60)** _____

Name of student _____

School Code _____

Class _____

Section-A (English)

M.M : 20

Directions (Questions 1 – 4): Read the passage and then choose the most appropriate answer for each of the given questions.

The essence of Gandhiji's teaching was meant not for his country or his people alone but for all mankind and is valid not only for today but for all the time. He wanted all men to be free so that they could grow unhampered into full self-realisation. He wanted to abolish the exploitation of man by man in any shape or form because both exploitation and submission to it are sin not only against society but against the moral law, the law of our being. The means to be compatible with this end therefore, he said have to be purely moral, namely unadulterated truth and non-violence. He had been invited by many foreigners to visit their countries and deliver his message to them directly but he decided to accept such invitations as, he said, he must make good what he claimed for: Truth and Ahimsa in his own country before he could launch on the gigantic task of winning or rather converting the world. With the attainment of freedom by India, by following his method, though in a limited way and in spite of all the imperfections in its practice, the condition precedent for taking his message to other countries was to a certain extent fulfilled. And although the partition has caused wounds and raised problems which claimed all his time and energy, he might have been able to turn his attention to his large question even in the midst of his distractions. Providence had ordained otherwise. May some individual or nation arise and carry forward the effort launched by him till the experiment is completed, the work finished and the objective achieved.

Q1. What effect did partition have on Gandhiji's time and energy? His time and energy

_____.

- a) remained unaffected
- b) were wasted a lot
- c) had claimed utility
- d) were not distracted

Q2. Gandhiji emphasized the moral purity of _____.

- a) means only
- b) ends only
- c) both means and ends
- d) truth alone

Q3. Which of the following sentence is true in context to the passage?

- a) Gandhiji wanted to abolish exploitation and encourage submission.
- b) Gandhiji wanted every individual to achieve self-realisation.
- c) To Gandhiji, moral purity of means was more important than moral purity of ends.
- d) Gandhiji was praised even by the people who were adversely affected by the partition.

Q4. The prime objective of Gandhiji's principle was to _____.

- a) remove poverty from India
- b) achieve freedom and attain unhampered growth
- c) oppose the partition of India
- d) win the people through Ahimsa

Directions (Questions 5 and 6): Out of the options given, choose the alternative which best expresses the meaning of the idiom/phrase

Q5. The secretary and the treasurer are hand in glove with each other.

- a) in close cooperation
- b) constantly fighting
- c) fostering harmful designs against one another
- d) suspicious of each other

Q6. The authorities took time to task for his negligence.

- a) gave him additional work
- b) suspended his assignment
- c) reprimanded him
- d) forced him to resign

Q7. Which of these statements is correctly punctuated?

- a) The woman in the blue dress knowing she was late, hurried to the office.
- b) The woman in the blue dress, knowing she was late hurried to the office.
- c) The woman in the blue dress, knowing she was late, hurried to the office.
- d) The woman, in the blue dress knowing, she was late hurried to the office.

Directions (Questions 8 and 9) : Out of the four alternatives, choose the one which can be substituted for the given phrase.

Q8. One who is determined to exact full vengeance for wrongs done to him

- a) Virulent
- b) Vindictive
- c) Usurer
- d) Vindicator

Q9. One who is habitually silent or talks less

- a) Servile
- b) Unequivocal
- c) Taciturn
- d) Synoptic

Q10. Arrange P, Q, R and S in order to make a meaningful sentence.

P: the areca palm has a perfectly straight slender trunk

Q: egg-shaped nuts

R: which produces yellow

S: that hang in thick bunches under the leaves

- a) SRPQ
- b) QPSR
- c) PRQS
- d) RQPS

Directions (Questions 11 and 12): Choose the option which contains a pair of words related to each other in the same way as the pair given in capital letters.

Q11. UNDERQUALIFIED : CREDENTIALS ::

- a) Lackluster : Enthusiasm
- b) Tentative: Doubt
- c) Tenacious: Determination
- d) Epicurean : Appreciation

Q12. SURREPTITIOUS :OBVIOUS ::

- a) Scholarly : Professional
- b) Harmonious: Musical
- c) Pacifying: Enraging
- d) Sponsored: Bribed

Directions (Questions 13 and 14): Choose the option closest in meaning to the given word.

Q13. VASSALAGE

- a) Employment
- b) Slavery
- c) Uneducated
- d) Autonomy

Q14. VEHEMENT

- a) Apathetic
- b) Ardent
- c) Biased
- d) Unpleasant

Directions (Questions 15 and 16): Find the relation in the sentences that follow.

Q15. Annotate is related to Text as Caption is related to _____.

- a) Novel
- b) Law
- c) Film
- d) Photograph

Q16. Kindle is related to Burn as Anger is related to _____.

- a) Resentful
- b) Determined
- c) Fear
- d) Furious

Directions (Questions 17 and 18) Select a word which is opposite in meaning to the underlined word.

Q17. The new teacher hadn't expected the students to be so obstreperous.

- a) excited
- b) vociferous
- c) energetic
- d) docile

Q18. The pugnacious demeanour of the politicians had the voters confused.

- a) disinterested
- b) amicable
- c) quarrelsome
- d) mean

Directions (Q. Nos. 19 and 20): Each question below has two blanks, each blank indicating that something has been omitted. Choose the set of words for each blank which best fits the meaning of the sentence as a whole.

Q19. The actress is _____ that she has not only acted opposite her childhood hero, but has also _____ out a song and recited a poem on-stage with the living legend.

- a) overjoyed, belted
- b) morose, sung
- c) ecstatic, written
- d) tense, prepared

Q20. _____ an earlier judgement, the high court has directed the state government to identify natural water resources in the state and _____ all illegal encroachments on them.

- a) Remembering, establish
- b) Citing, remove
- c) Cancelling, build
- d) Quoting, destroying

SAT
Main (Class – VIII)
Section - B (Mathematics)

M.M : 20

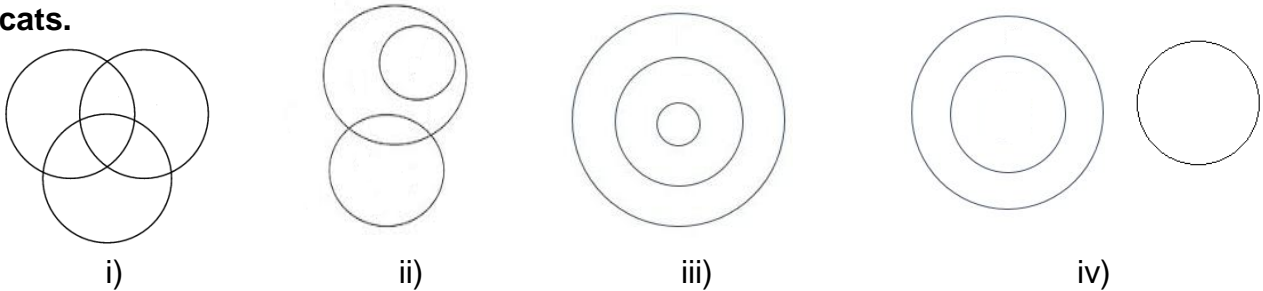
Name of the Student : _____

Marks Obtained: _____

Q1. Sam ranked 9th from the top and 38th from the bottom in a class. How many students are there in the class?

- a) 45 b) 47 c) 46 d) None of these.

Q2. Choose the diagram which shows the best relationship amongst birds, crows and cats.



- a) i b) ii c) iii d) None of these.

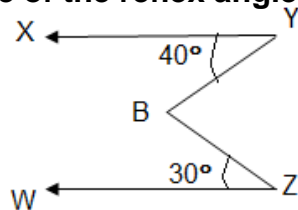
Q3. Simplify $\frac{3^n + 3^{n-1}}{3^{n+1} - 3^n}$, where n is a rational number.

- a) $\frac{2}{3}$ b) $\frac{3}{2}$ c) 3^n d) None of these.

Q4. For every 12 mangoes that I buy, 3 turn out to be rotten. At this rate, how many rotten mangoes will I have if I buy 100 mangoes?

- a) 15 b) 20 c) 25 d) None of these.

Q5. Find the measure of the reflex angle YBZ in the following figure, if $YX \parallel ZW$:



- a) 70° b) 110° c) 290° d) None of these.

Q6. A sum of money doubles itself in 8 years. What is the rate of interest?

- a) 6.25% p.a. b) 12.5 % p.a. c) 25% p.a. d) None of these.

Q7. If South-East becomes North, North-East becomes West and so on, what will West become?

- a) North-East b) North-West c) South-East d) None of these.

Q8. A room is 7.6 m × 6.6 m. A space of 0.5 m on each side is left and a carpet is laid on the remaining area which costs Rs 3,960. The carpet was cut from a 70 cm wide roll. Find the cost of carpet per metre.

- a) Rs 25/m b) Rs 75/m c) Rs 150/m d) None of these.

- Q9. Find the missing number in the following series.**
4, 18, ?, 100, 180, 294, 448
 a) 48 b) 50 c) 58 d) None of these.
- Q10. If the mean of 5 observations $x, x+2, x+4, x+6$ and $x+8$ is 11, find the mean of the first, third and fifth observations.**
 a) 7 b) 11 c) 15 d) None of these.
- Q11. Which of the following regular polygons has its interior and exterior angles in the ratio 5:1?**
 a) 15 sided polygon b) 12 sided polygon c) 20 sided polygon d) None of these.
- Q12. If the perimeter of a rectangle obtained by increasing one side of a square by 2 cm and decreasing another side by 2 cm is 64 cm, then find the side of the original square.**
 a) 4 cm b) 8 cm c) 16 cm d) None of these.
- Q13. If $pqr = 1, rst = 1$ and $spr = 0$, which of the following must be zero?**
 a) Q b) S c) R d) None of these.
- Q14. The sum of all numbers from 1 to 10 is 55. Which of these gives the sum of all the numbers from 101 to 110?**
 a) $1000+55$ b) 100×55 c) $100+55$ d) None of these.
- Q15. If the side of a square is 4 metres and it is converted into a rhombus whose major diagonal is 6 metres, find the area of the rhombus.**
 a) 25 sq m b) 42 sq m c) $6\sqrt{7}$ sq m d) None of these.
- Q16. A horse is placed for grazing inside a rectangular field 70 m by 52 m tethered to one corner by a rope 21 m long. On how much area can it graze?**
 a) 346.5 sq m b) 693 sq m c) 3,293.5 sq m d) None of these.
- Q17. Find the largest number that will divide 398, 436 and 542 leaving remainder 7, 11 and 15 respectively.**
 a) 13 b) 17 c) 19 d) None of these.
- Q18. A purse has 25 paise coins and 50 paise coins. The number of 25 paise coins is thrice the number of 50 paise coins. If the total value of money in the purse is Rs 75, find the number of 50 paise coins in the purse.**
 a) 50 b) 60 c) 180 d) None of these.
- Q19. Find the value of x in $3(x+3)-2(x-1)=5(x-5)$.**
 a) 9 b) 8 c) 36 d) None of these.
- Q20. A grocer buys eggs at 10 for Rs 8 and sells at 8 for Rs 10. Find his gain or loss%.**
 a) Loss = $56\frac{1}{4}\%$ b) Gain = $56\frac{1}{4}\%$
 c) Neither Profit nor Loss d) None of these.

SAT
Main (Class – VIII)
Section - C (Science)

M.M : 20

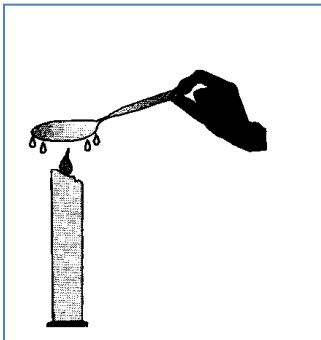
Name of the Student : _____

Marks Obtained: _____

Q1. Lunar eclipse occurs when earth comes in between sun and the moon. Solar eclipse occurs when moon comes in between sun and earth. This suggests that

- a) both eclipses occur on a new moon day.
- b) lunar eclipse occur on a new moon day.
- c) solar eclipse occur on a new moon day.
- d) both eclipses occur on a full moon day.

Q2. A spoon is kept in contact with ice cubes for some time. Later, the same spoon was held over the flame of a small candle. The observation is shown in the figure. What do you infer from the given figure?



- a) Spoon is an inflammable substance.
- b) Burning of candle is a spontaneous process.
- c) Carbon dioxide is a product of combustion.
- d) Water vapour is a product of combustion.

Q3. A dog barks in a park and hears its echo after 0.5 seconds. The speed of its bark got reflected by a nearby building. The speed of sound in air is 346 m/s. The distance between the dog and the building is

- a) 80.6 m
- b) 8.65 m
- c) 86.5 m
- d) 75 m

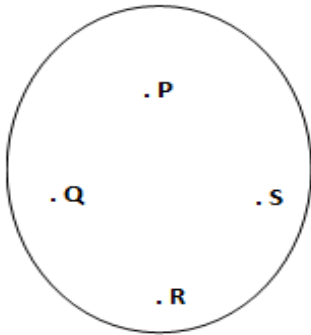
Q4. A car at 7:30 am is moving at a constant speed of 4 km/min. and an odometer reading recorded is 28568 km. What would be the odometer reading at 9:15 am?

- a) 28673 km
- b) 28988 km
- c) 29255 km
- d) 28568 km

Q5. A man is standing on a boat in a still water. If he starts moving towards the shore, the boat will

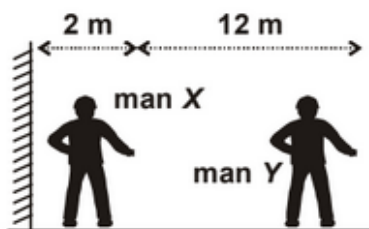
- a) Move away from the shore
- b) Remains stationary
- c) Move towards the shore
- d) Sink

Q6. The balloon shown here is filled with water. Rajesh wants to make a hole in the balloon so that water comes out with maximum pressure. At which point should he make the hole? (For the shown position of the balloon)



- a) P
- b) Q
- c) R
- d) S

Q7. Two men are standing in front of a plane mirror as shown. When man X looks into the mirror, how far away from him will man Y seem to be?



- a) 14 m
- b) 16 m
- c) 12 m
- d) 10 m

Q8. Megha observes that the water surface of the lake near her locality is gradually getting covered with algae. She is curious to know the cause for such algal bloom. Which of the following can be the cause for this?

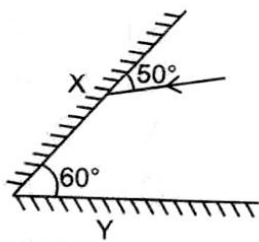
- a) Disposal of concrete and cement from the construction area of locality into lake.
- b) Increased population of aquatic life in the lake.
- c) Disposal of pollutant having high level of organic matter into the lake.
- d) High rainfall.

Q9. Which of the following statements are true/false?

- (i) In insects, circulatory body fluids serve to distribute oxygen to tissues.
- (ii) Yeasts respire aerobically, therefore they are used to make wine and beer.
- (iii) Bronchitis is inflammation of bronchi which may be caused on exposure to air pollutants.
- (iv) In an healthy person, maximum capacity of lungs for inhaled air is 1500 mL.
- (v) Sneezing expels the foreign particles from the inhaled air.

- a) Statement (i), (ii) and (iv) are false, while statements (iii) and (v) are true.
- b) Statement (i), (ii) and (iii) are false, while statements (iv) and (v) are true.
- c) Statement (ii) is incorrect, while statements (i) (iii), (iv) and (v) are correct.
- d) Statements (iii) and (v) are incorrect, while statements (i), (iii) and (iv) are correct.

Q10. In the given figure, two mirrors X and Y are situated at an angle of 60° with each other and a ray of light is incident on mirror X at an angle of 50° . When the ray is reflected by the mirror Y, then what is the angle of reflection at this mirror?

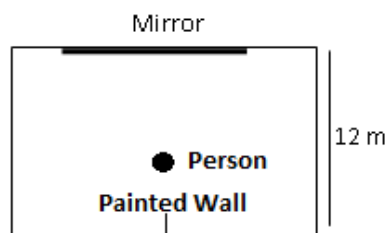


- a) 35°
- b) 55°
- c) 50°
- d) 20°

Q11. Two cyclists, 'k' km apart and starting at the same time, would be together in 'r' hours if they travelled in the same direction, but would pass each other in 't' hours if they travelled in opposite directions. The ratio of the speed of the faster cyclist to that of the slower is

- a) $r + t / r - t$
- b) $r / r - t$
- c) $r + t / r$
- d) r / t

Q12. A person standing at the center of a rectangular room is looking into a 1m long mirror at the opposite end of the room. How much of the painted wall can he see through the given mirror?

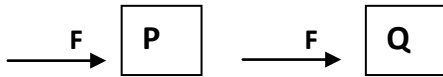


- a) 1 m
- b) 2 m
- c) 3 m
- d) 4 m

Q13. X is present in the stomach. However, presence of excess of it causes indigestion, which requires the intake of milk of magnesia to undo the effect of X. What is X?

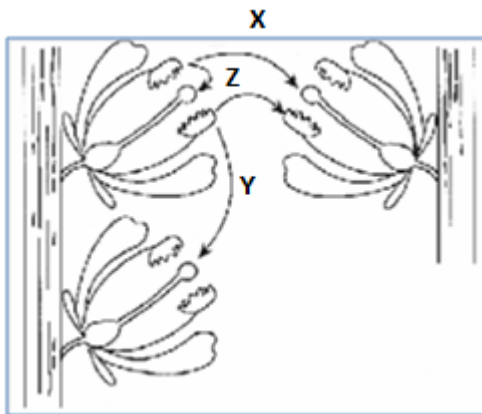
- a) HCl
- b) H_2SO_4
- c) NaOH
- d) KOH

Q14. Two forces of equal magnitude F act on two isolated bodies P and Q as shown in the figure. The mass of body Q is three times that of body P. The magnitude of the acceleration of P is



- a) three times that of Q
 - b) $\frac{1}{3}$ that of Q
 - c) nine times that of Q
 - d) $\frac{1}{9}$ that of Q.
- 15. The given diagram shows two plants of the same species. Refer to the diagram and answer the following questions.**

- (i) Which arrow indicates a process that would not lead to sexual reproduction?
- (ii) Which arrow represents a type of pollination that would result in greater adaptability of the particular species to potential environmental changes?



- a) (i)-Y, (ii)-Z
 - b) (i)-Z, (ii)-X
 - c) (i)-Y, (ii)-X
 - d) (i)-X, (ii)-Y
- 16. During propagation of longitudinal wave, if at any time, there is compression at a point, after how much time there will be rarefaction?**

- a) T
- b) $\frac{T}{3}$
- c) $\frac{T}{4}$
- d) $\frac{T}{2}$

Q17. In an experiment demonstrating the evolution of oxygen in hydrilla, sodium bicarbonate is added to water in the experimental set up. What would happen if all other conditions are favourable?

- a) Amount of oxygen evolved decreases as carbon dioxide in water is absorbed by sodium bicarbonate.
- b) Amount of oxygen evolved decreases as the availability of carbon dioxide increases.
- c) Amount of oxygen evolved increases as the availability of carbon dioxide increases.
- d) Amount of oxygen evolved increases as carbon dioxide in water is absorbed by sodium bicarbonate.

Q18. Nikita observed flowers of two different plants X and Y. Flowers of X are large, coloured, showy and produce nectar while flowers of Y are small, dull without nectar. Pollen grains of X are sticky and bigger while pollen grains of Y are small in size and dry.

Which of the following is correct regarding X and Y?

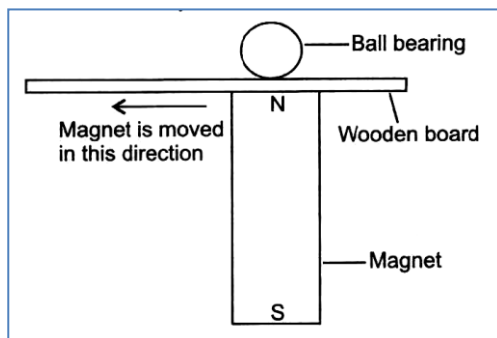
- a) X could be pollinated by insect whereas Y could be pollinated by wind.
- b) X could be pollinated by wind whereas Y could be pollinated by water.
- c) X could be pollinated by wind whereas Y could be pollinated by insect.
- d) X could be pollinated by water whereas Y could be pollinated by insect.

Q19. There are two bottles of glass, one bottle is two third filled with water and another bottle is filled one third with water. When we blow across the mouth of each bottle, then

- i) the bottle with less air in it gives the note of higher pitch.
- ii) the shorter the air column, the higher the pitch of the note produced.

- a) Both (i) and (ii) are correct and (ii) is the correct explanation of (i).
- b) Both (i) and (ii) are correct but (ii) is not the correct explanation of (i)
- c) Only (i) is correct.
- d) Only (ii) is correct.

Q20. A boy set up an experiment as shown in the diagram. As he slide the magnet across the wooden board, the ball bearing followed the magnet's movement and direction. What does the experiment show?



- (i) Magnetic force can be seen due to friction between ball bearing and wooden board.
 - (ii) Friction and gravity help to move the ball bearing.
 - (iii) The ball bearing is made of a magnetic substance.
 - (iv) Magnetic force can pass through the wooden board.
- a) (i) and (ii)
 - b) (iii) and (iv)
 - c) (i), (ii) and (iv)
 - d) (ii), (iii) and (iv)